

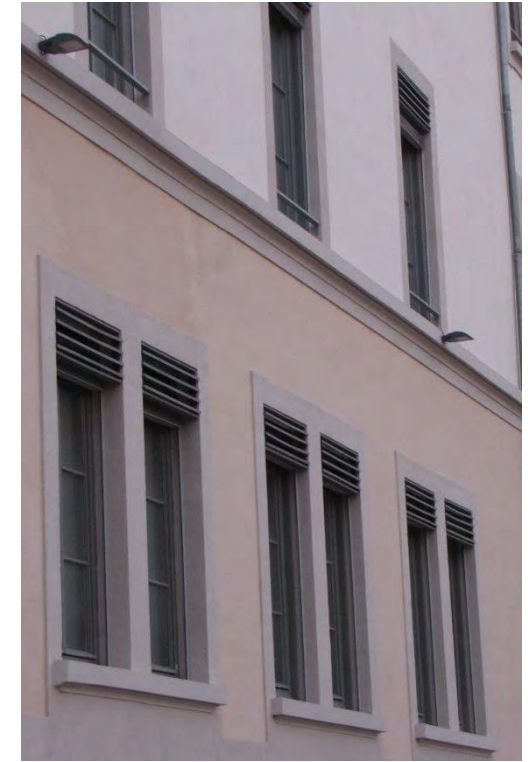
# Solutions Décharge

**SILL FRANCE**

Tel : 03 88 77 49 29

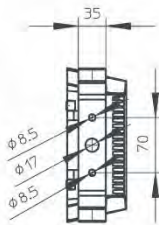
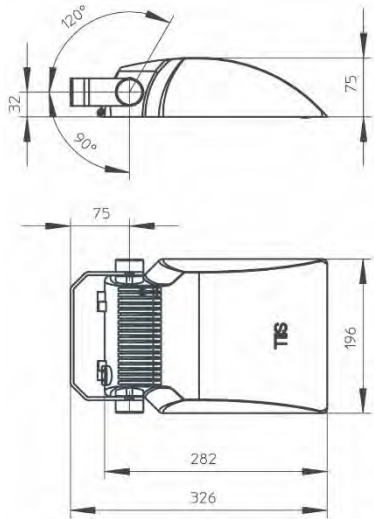
Fax : 03 88 78 72 57

E-Mail : [contact@sillfrance.com](mailto:contact@sillfrance.com)

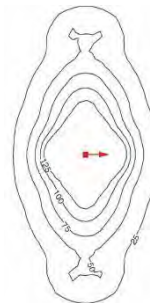


<b>Classes électriques possibles</b>	1 ou 2
<b>Optiques disponibles</b>	4
<b>lodes Métalliques (IM)</b>	20 à 35 W

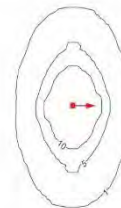
<b>Montage</b>	Etrier orientable
----------------	-------------------



**Routière intensive**



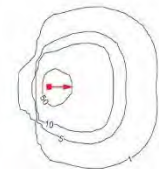
**Routière extensive**

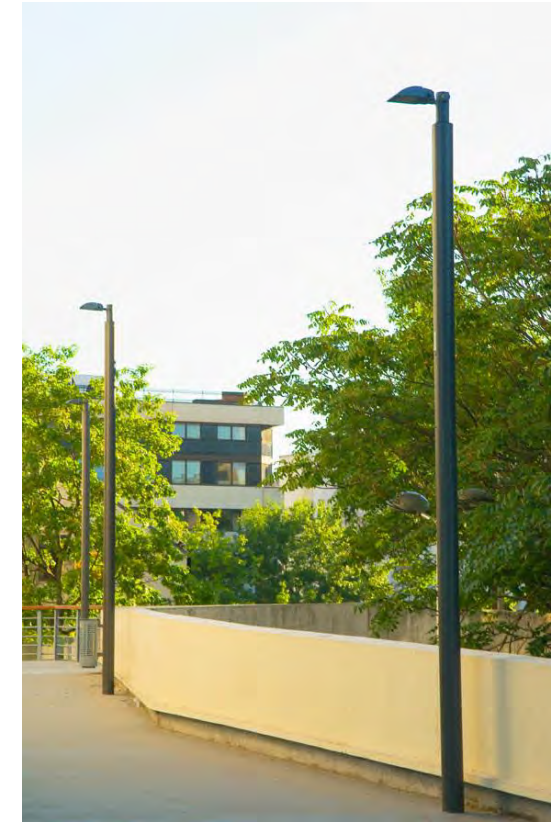


**Asymétrique intensive**



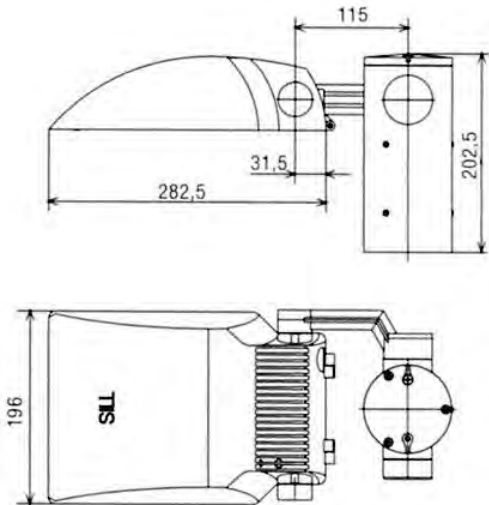
**Asymétrique extensive**



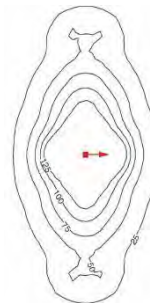


<b>Classes électriques possibles</b>	1 ou 2
<b>Optiques disponibles</b>	4
<b>lodies Méalliques (IM)</b>	20 à 35 W

<b>Montage</b>	Sur mât
<b>Nombre par crosse</b>	1 ou 2
<b>Embout en top</b>	Ø 60 x 100mm Ø 76 x 130mm



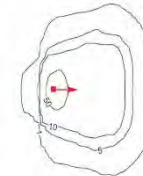
**Routière intensive**



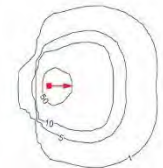
**Routière extensive**

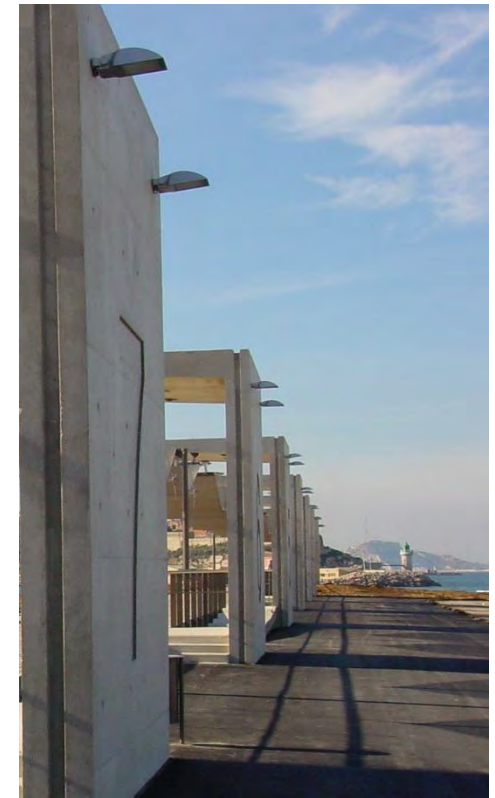


**Asymétrique intensive**



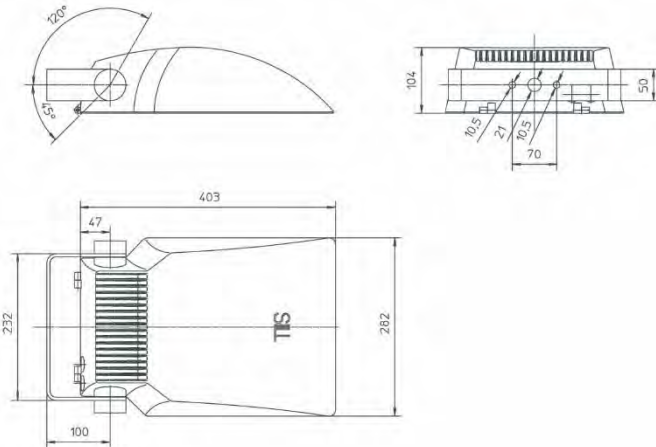
**Asymétrique extensive**



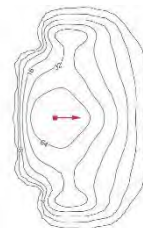


<b>Classes électriques possibles</b>	1 ou 2
<b>Optiques disponibles</b>	4
<b>Sodium Haute Pression (SHP)</b>	70 W
<b>Iodures Métalliques (IM)</b>	35 à 150 W
<b>Cosmopolis</b>	45 à 90 W

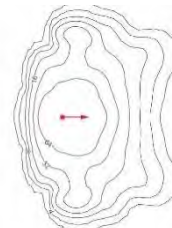
<b>Montage</b>	Etrier orientable
----------------	-------------------



Routière intensive



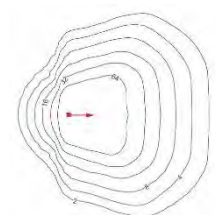
Routière extensive



Asymétrique intensive



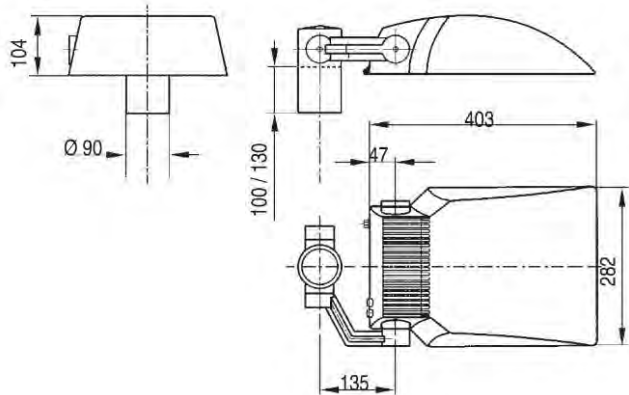
Asymétrique extensive



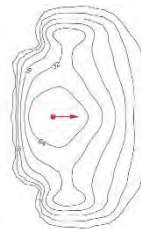


<b>Classes électriques possibles</b>	1 ou 2
<b>Optiques disponibles</b>	4
<b>Sodium Haute Pression (SHP)</b>	70 W
<b>Iodures Métalliques (IM)</b>	35 à 150 W
<b>Cosmopolis</b>	45 à 90 W

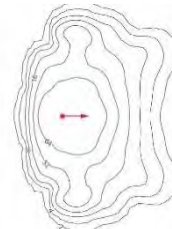
<b>Montage</b>	Sur mât
<b>Nombre par crosse</b>	1 ou 2
<b>Embout en top</b>	Ø 60 x 100mm Ø 76 x 130mm



Routière intensive



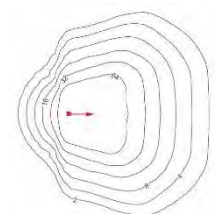
Routière extensive

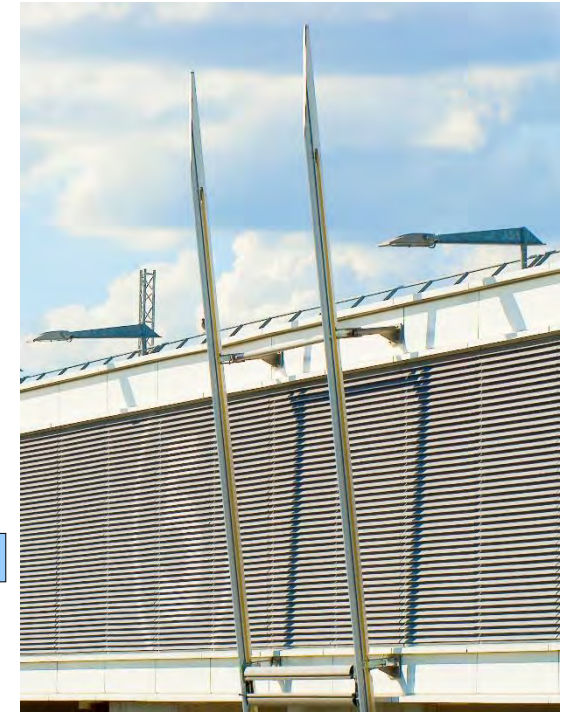


Asymétrique intensive



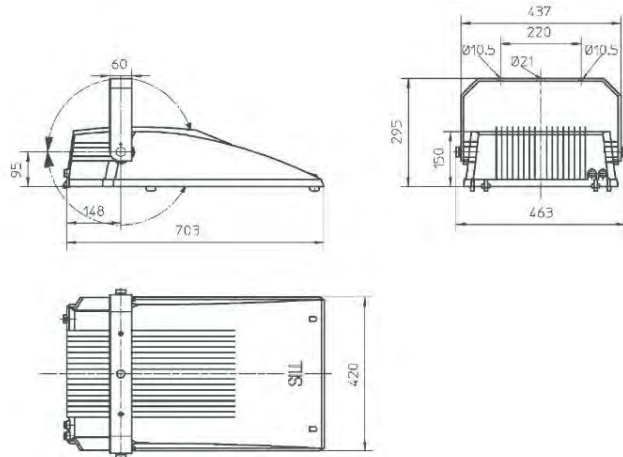
Asymétrique extensive



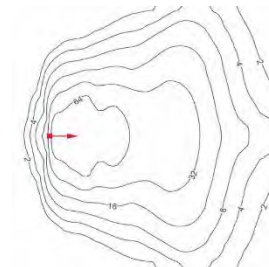


<b>Classes électriques possibles</b>	1 ou 2
<b>Optiques disponibles</b>	2
<b>Sodium Haute Pression (SHP)</b>	250 à 400 W
<b>Iodures Métalliques (IM)</b>	250 à 400 W
<b>Cosmopolis</b>	45 à 140 W

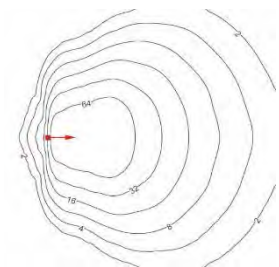
<b>Montage</b>	Etrier orientable
----------------	-------------------

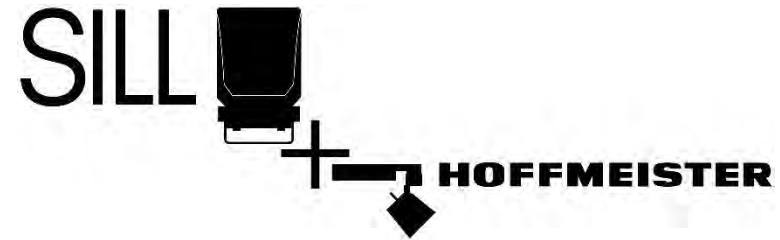


**Asymétrique intensive**



**Asymétrique extensive**





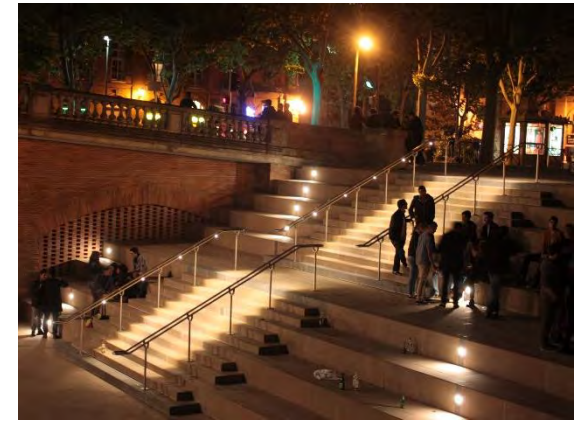
# Solutions LED

**SILL FRANCE**

Tel : 03 88 77 49 29

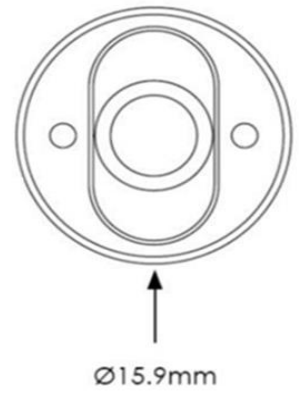
Fax : 03 88 78 72 57

E-Mail : [contact@sillfrance.com](mailto:contact@sillfrance.com)

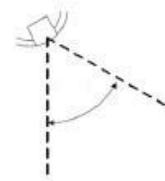


<b>Classe électrique</b>	3
<b>Optiques disponibles</b>	3
<b>LED</b>	1,5 W
<b>Teintes disponibles</b>	3000 / 4000K/ Autres sur demande

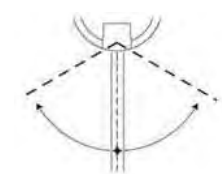
<b>Montage</b>	Encastré affleurant
<b>Epaisseur mini matière</b>	1,5 mm
<b>Formes</b>	Ronde ou Carrée



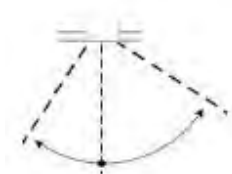
Symétrique unilatérale



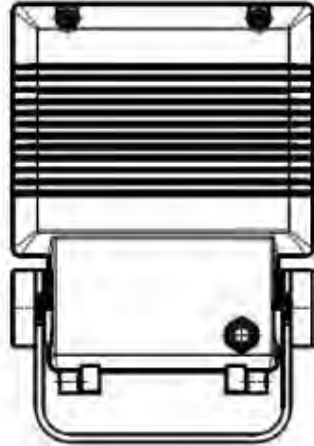
Symétrique bilatérale



Asymétrique

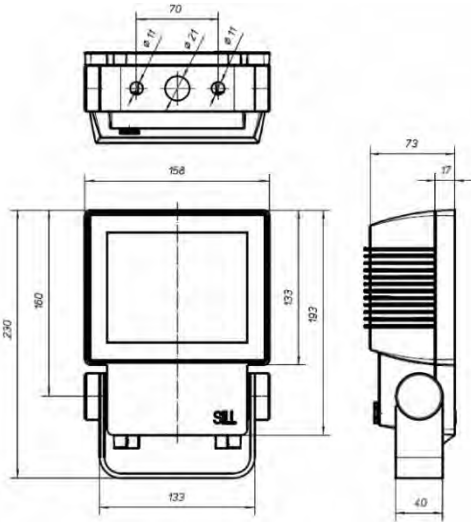






<b>Classe électrique</b>	1
<b>Optiques disponibles</b>	5
<b>LED</b>	28 à 30 W
<b>Teintes disponibles</b>	3000 / 4000 / 5700K

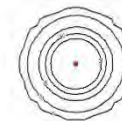
<b>Montage</b>	Etrier orientable Sur mât Piquet de terre
<b>Nombre par crosse</b>	1 ou 2
<b>Embout en top</b>	Ø 60 x 100mm Ø 76 x 130mm



Symétrique semi-intensive

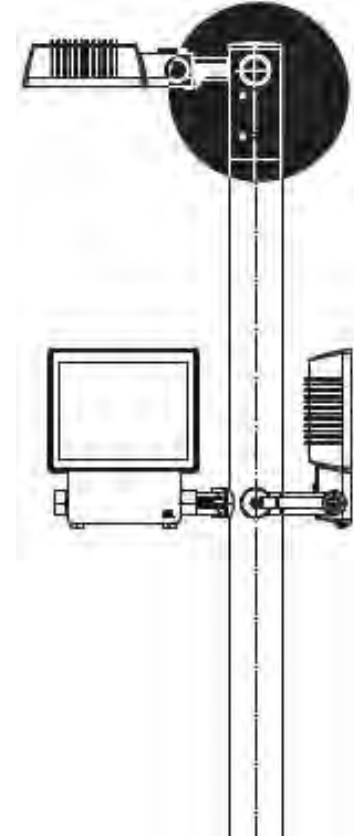
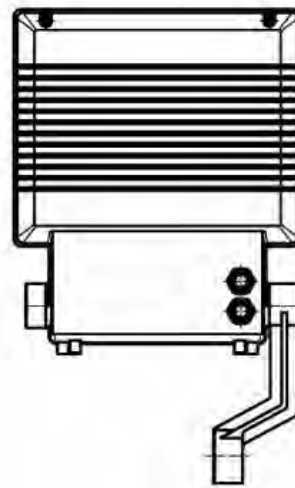
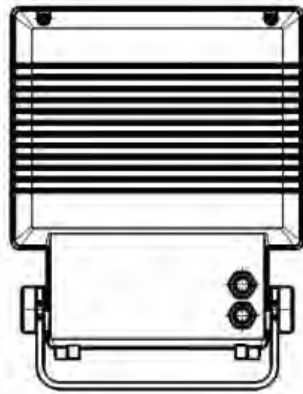


Symétrique semi-extensive



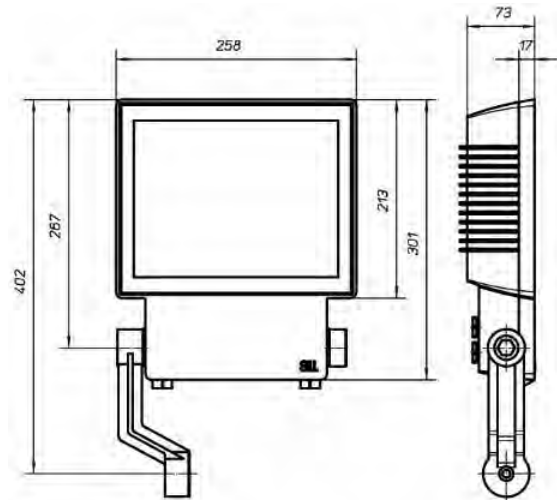
Bandeau elliptique



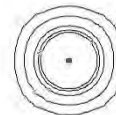


<b>Classe électrique</b>	1
<b>Optiques disponibles</b>	6
<b>LED</b>	70W
<b>Teintes disponibles</b>	3000 / 4000 / 5700K

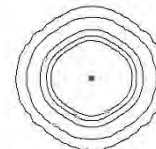
<b>Montage</b>	Etrier orientable Sur mât
<b>Nombre par crosse</b>	1 ou 2
<b>Embout en top</b>	Ø 60 x 100mm Ø 76 x 130mm



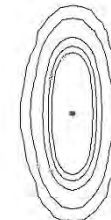
Symétrique semi-intensive



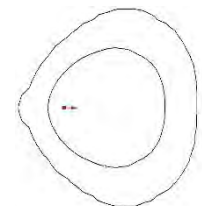
Symétrique semi-extensive

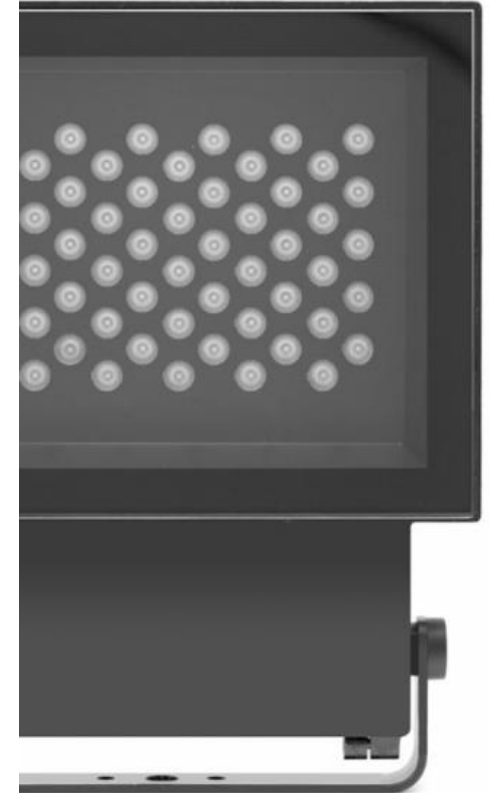
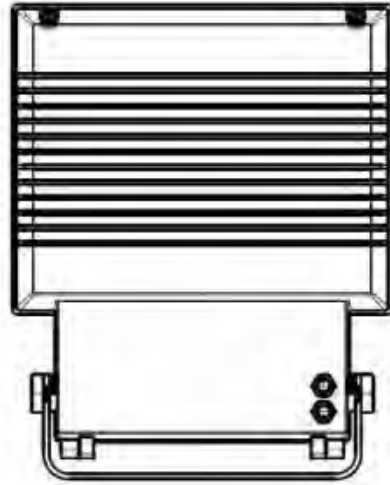
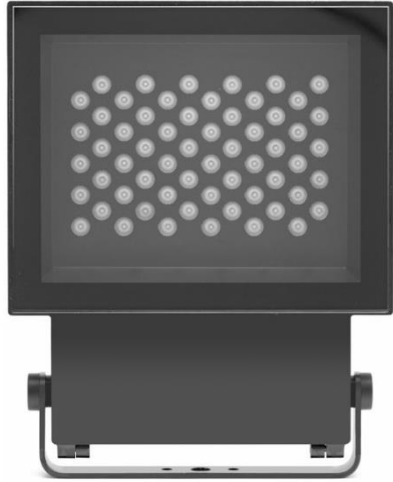


Bandeau elliptique



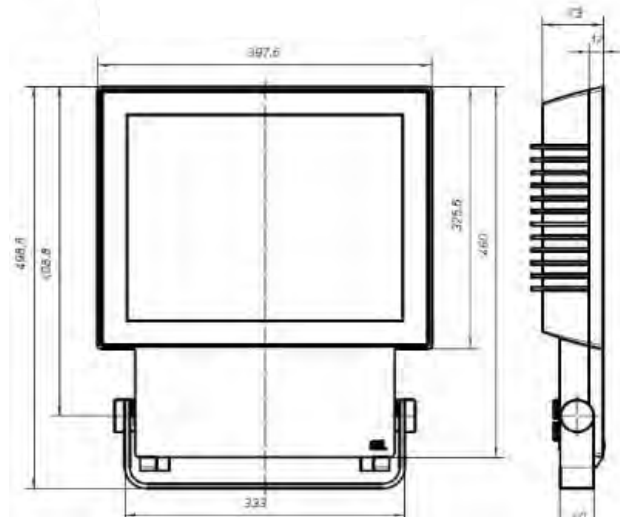
Asymétrique



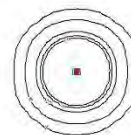


Classe électrique	1
Optiques disponibles	6
LED	136 W
Teintes disponibles	3000 / 4000 / 5700K

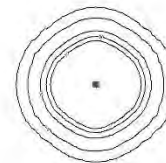
Montage	Etrier orientable
---------	-------------------



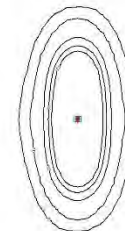
Symétrique semi-intensive



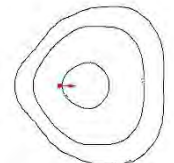
Symétrique semi-extensive



Bandeau elliptique



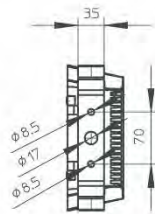
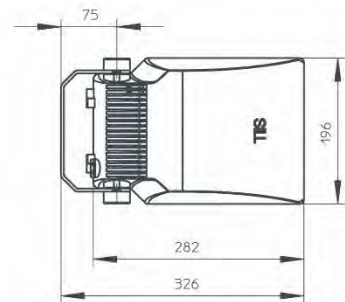
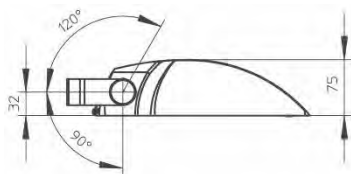
Asymétrique





<b>Classe électrique</b>	1
<b>Optiques disponibles</b>	2
<b>LED</b>	22 W
<b>Teintes disponibles</b>	3000 / 4000 / 5700K

<b>Montage</b>	Etrier orientable
----------------	-------------------

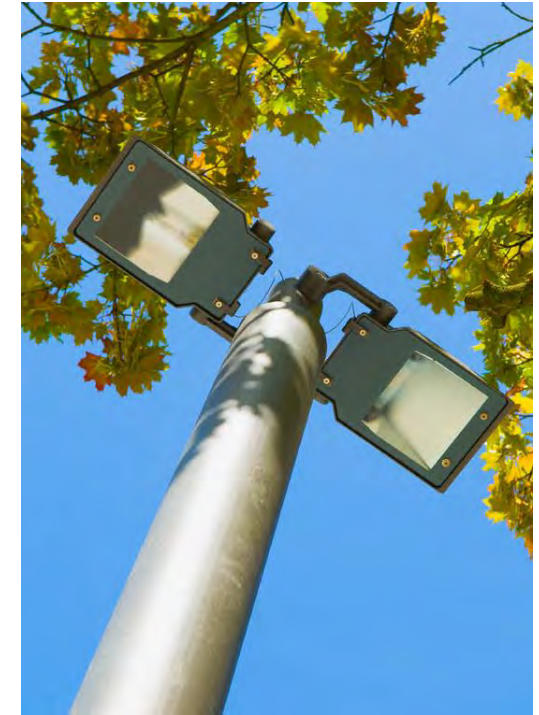


Asymétrique intensive



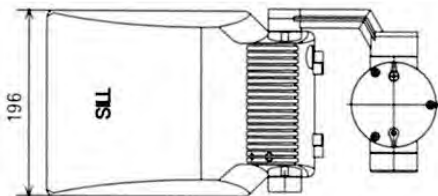
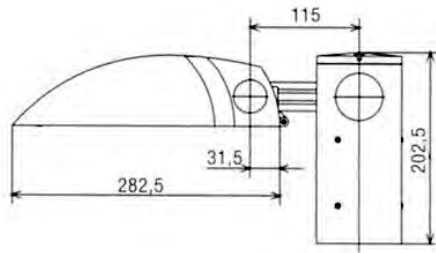
Asymétrique extensive





<b>Classe électrique</b>	1
<b>Optiques disponibles</b>	2
<b>LED</b>	22 W
<b>Teintes disponibles</b>	3000 / 4000 / 5700K

<b>Montage</b>	Sur mât
<b>Nombre par crosse</b>	1 ou 2
<b>Embout en top</b>	Ø 60 x 100mm Ø 76 x 130mm



Asymétrique intensive



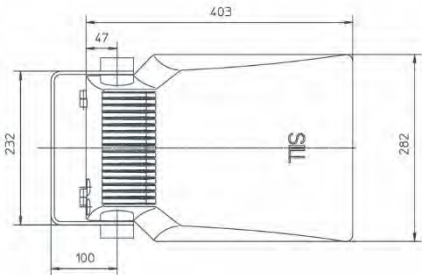
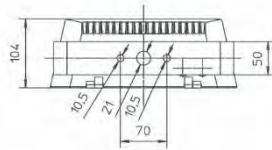
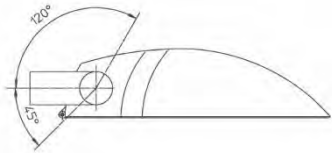
Asymétrique extensive





Classe électrique	1
Optiques disponibles	3
LED	44 W
Teintes disponibles	3000 / 4000 / 5700K

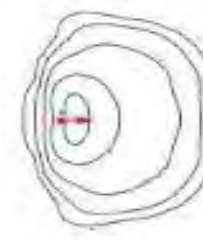
Montage	Etrier orientable
---------	-------------------



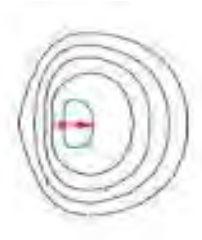
Routière



Asymétrique intensive



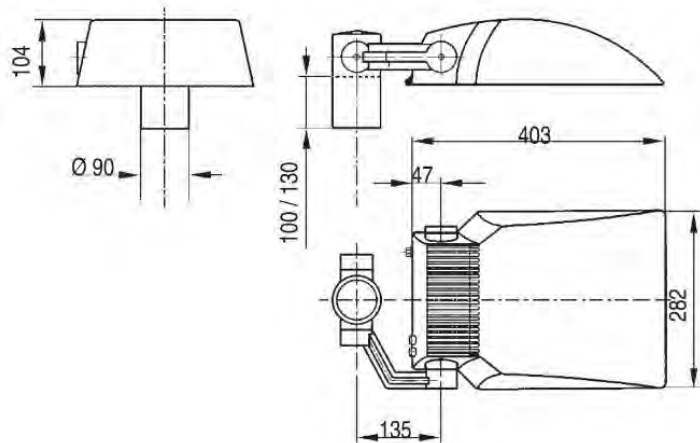
Asymétrique extensive





<b>Classe électrique</b>	1
<b>Optiques disponibles</b>	3
<b>LED</b>	44 W
<b>Teintes disponibles</b>	3000 / 4000 / 5700K

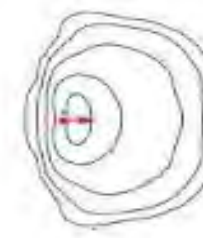
<b>Montage</b>	Sur mât
<b>Nombre par crosse</b>	1 ou 2
<b>Embout en top</b>	Ø 60 x 100mm Ø 76 x 130mm



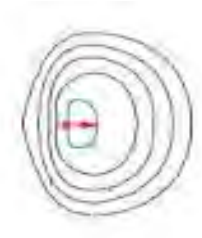
**Routière**



**Asymétrique intensive**



**Asymétrique extensive**

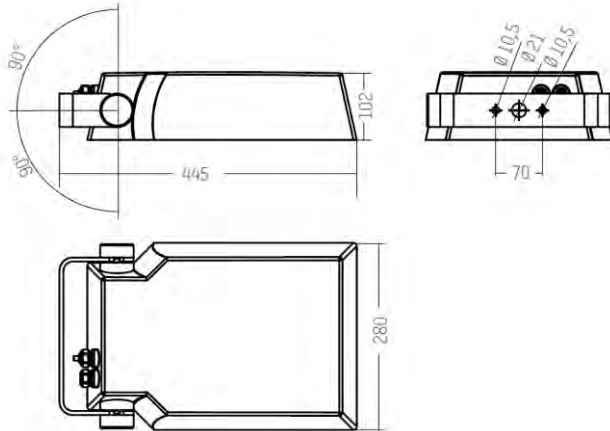




Classe électrique	1
Optiques disponibles	3
LED	49 W
Teintes disponibles	3000 / 4000 / 5700K

### Montage

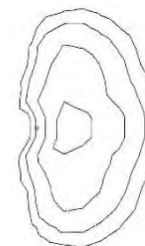
Etrier orientable  
Sur Bras déco  
(identique 154)



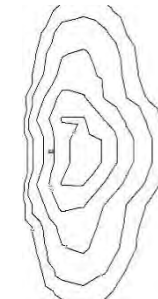
Elliptique



Routière intensive



Routière extensive

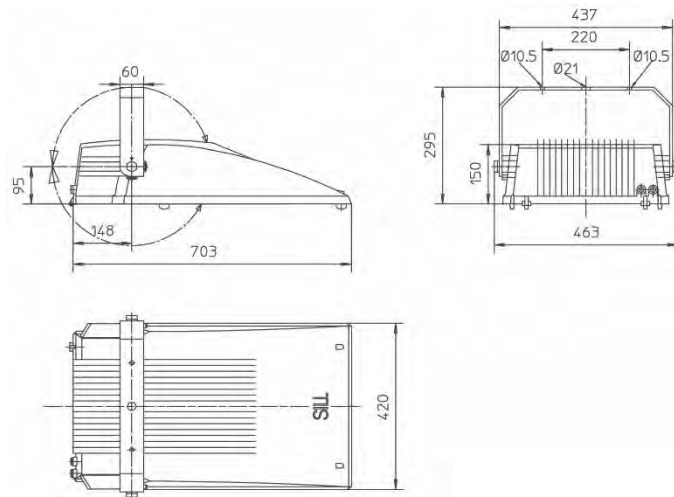




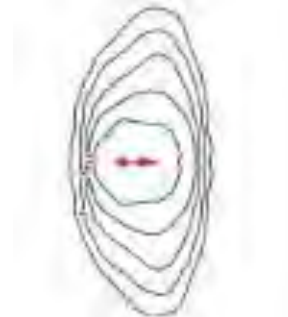


Classes électriques possibles	1
Optiques disponibles	3
LED	120 W
Teintes disponibles	3000 / 4000 / 5700K

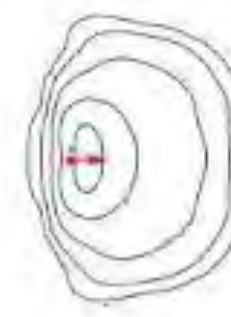
Montage	Etrier orientable
---------	-------------------



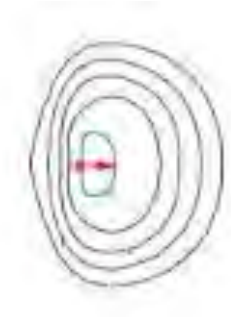
Routière



Asymétrique intensive



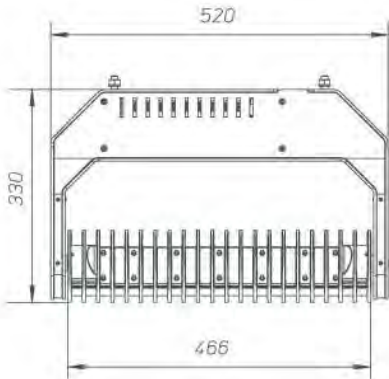
Asymétrique extensive



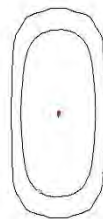


<b>Classe électrique</b>	1
<b>Optiques disponibles</b>	7
<b>LED</b>	74 W
<b>Teintes disponibles</b>	3000 / 4000 / 5700K

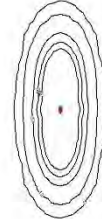
<b>Montages</b>	Applique murale Sur mât
<b>Embout en top</b>	Ø 76 x 130mm



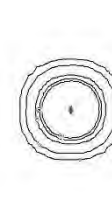
**Routière**



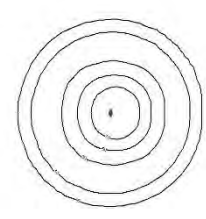
**Asymétrique intensive**



**Symétrique intensive**



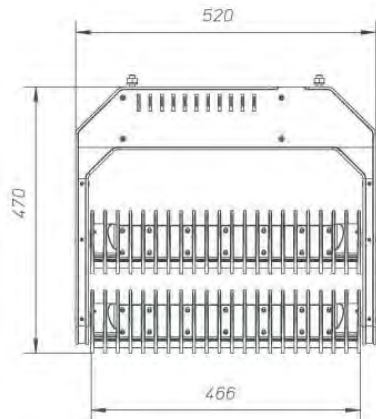
**Symétrique extensive**



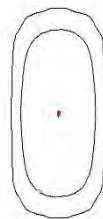


<b>Classe électrique</b>	1
<b>Optiques disponibles</b>	7 par réglette
<b>LED</b>	2x 74 W
<b>Teintes disponibles</b>	3000 / 4000 / 5700K

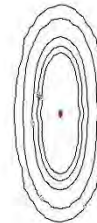
<b>Montages</b>	Applique murale Sur mât
<b>Embout en top</b>	Ø 76 x 130mm



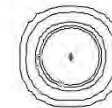
**Routière**



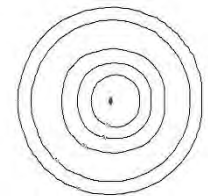
**Asymétrique intensive**

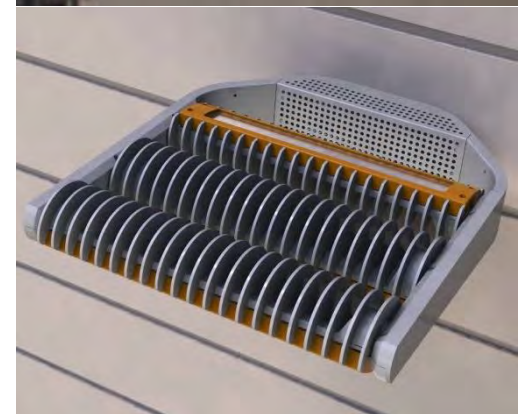
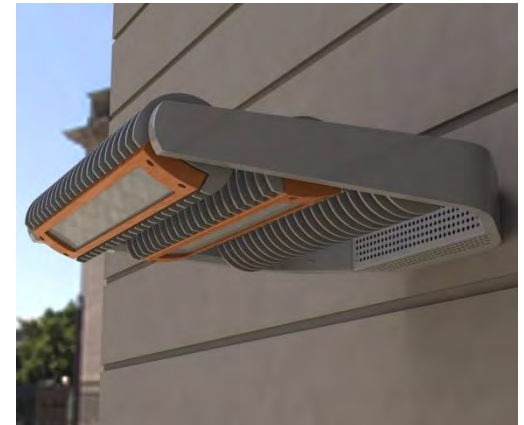


**Symétrique intensive**



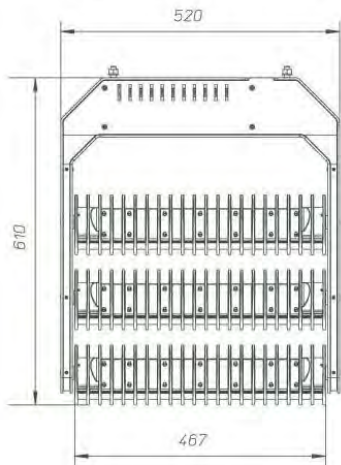
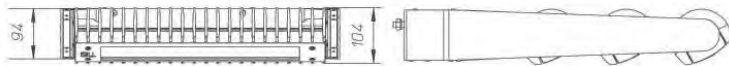
**Symétrique extensive**



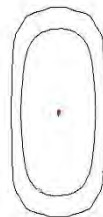


<b>Classe électrique</b>	1
<b>Optiques disponibles</b>	7 par réglette
<b>LED</b>	3x 74 W
<b>Teintes disponibles</b>	3000 / 4000 / 5700K

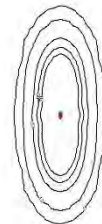
<b>Montages</b>	Applique murale Sur mât
<b>Embout en top</b>	Ø 76 x 130mm



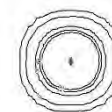
**Routière**



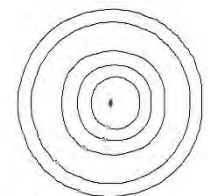
**Asymétrique intensive**

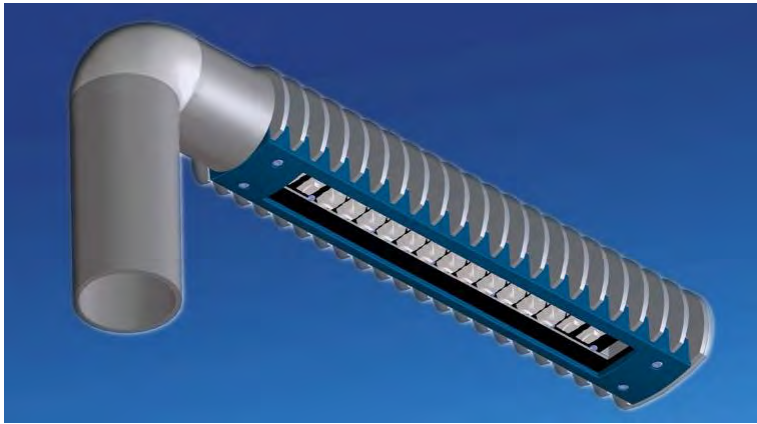


**Symétrique intensive**



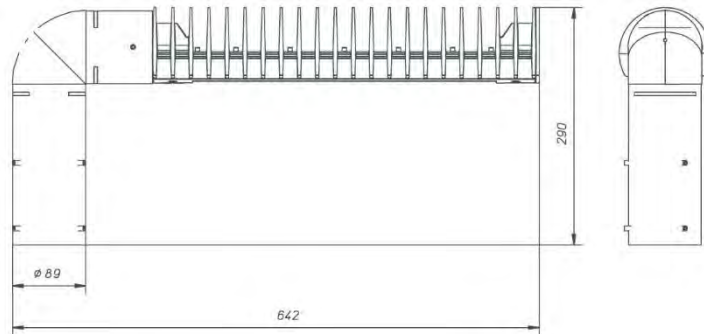
**Symétrique extensive**



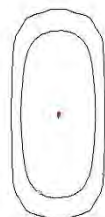


<b>Classe électrique</b>	1
<b>Optiques disponibles</b>	7
<b>LED</b>	74 W
<b>Teintes disponibles</b>	3000 / 4000 / 5700K

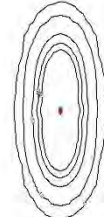
<b>Montage</b>	Sur mât
<b>Embout en top</b>	Ø 76 x 130mm



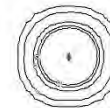
**Routière**



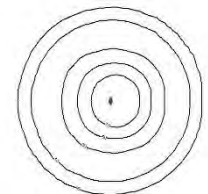
**Asymétrique intensive**

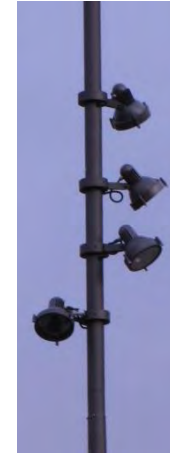


**Symétrique intensive**



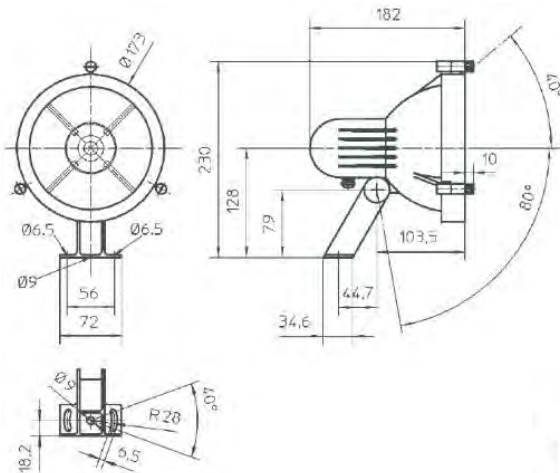
**Symétrique extensive**





<b>Classe électrique</b>	1
<b>Optiques disponibles</b>	5
<b>LED</b>	15W
<b>Teintes disponibles</b>	3000 / 4000 / 5700K

<b>Montages</b>	Sur étrier standard Sur étrier trapézoïdal Sur bras décoratif
-----------------	---



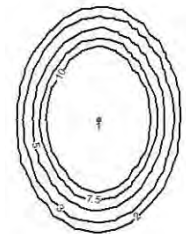
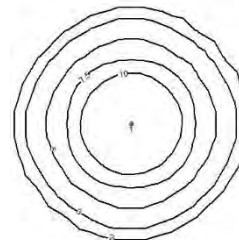
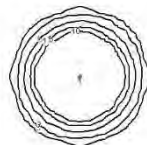
**Intensive**

**Semi-intensive**

**Extensive**

**Elliptique intensive**

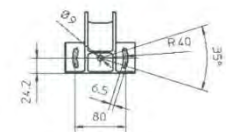
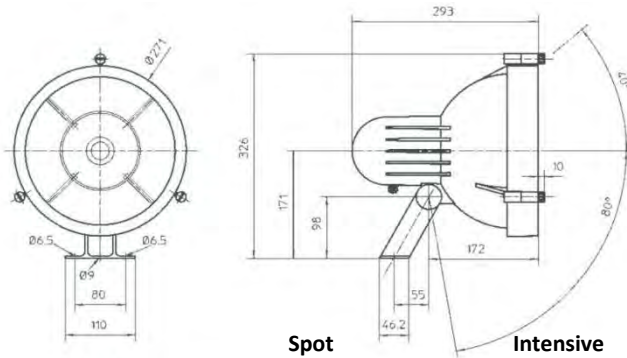
**Elliptique extensive**



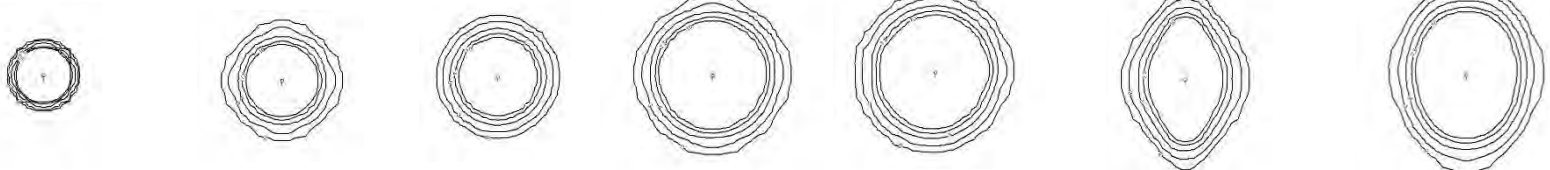


<b>Classe électrique</b>	1
<b>Optiques disponibles</b>	7
<b>LED</b>	70W
<b>Teintes disponibles</b>	3000 / 4000 / 5700K

<b>Montages</b>	Sur étrier standard Sur étrier trapézoïdal Sur bras décoratif
-----------------	---



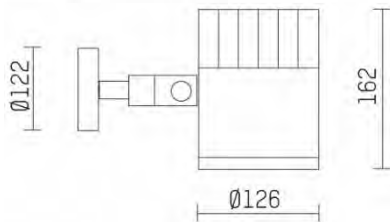
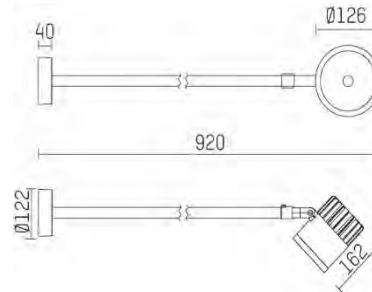
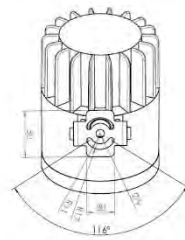
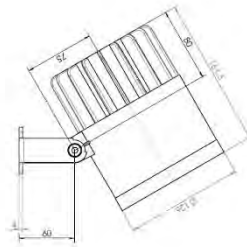
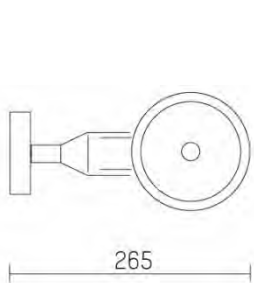
**Spot**      **Intensive**      **Semi-intensive**      **Semi- Extensive**      **Extensive**      **Elliptique intensive**      **Elliptique extensive**





<b>Classe électrique</b>	1
<b>Optiques disponibles</b>	5
<b>LED</b>	14 à 28 W
<b>Teintes disponibles</b>	3000 / 4000K

<b>Montages</b>	Sur patère
	Sur étrier orientable
	Sur bras de déport
	Sur Piquet pour sol



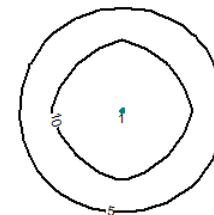
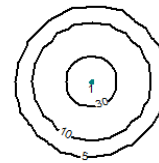
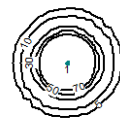
**Intensive**

**Semi-intensive**

**Semi-extensive**

**Extensive**

**Elliptique**

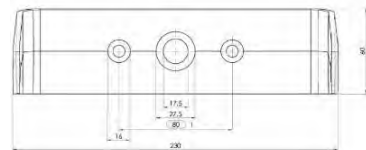
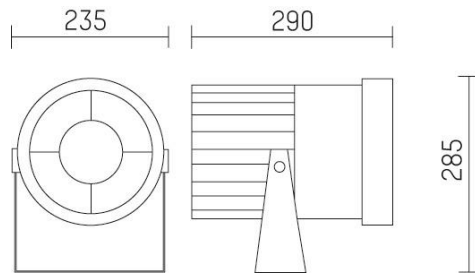




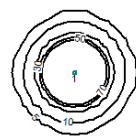


<b>Classe électrique</b>	1
<b>Optiques disponibles</b>	5
<b>LED</b>	37W
<b>Teintes disponibles</b>	3000 / 4000K

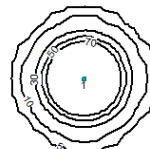
<b>Montages</b>	Sur étrier orientable
-----------------	-----------------------



**Intensive**



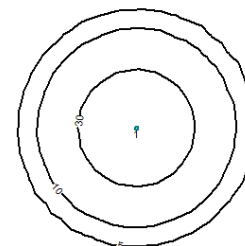
**Semi-intensive**



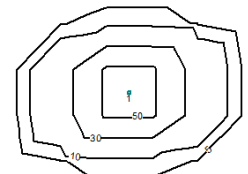
**Semi-extensive**



**Extensive**



**Elliptique**



ICONIC 01

ICONIC 02

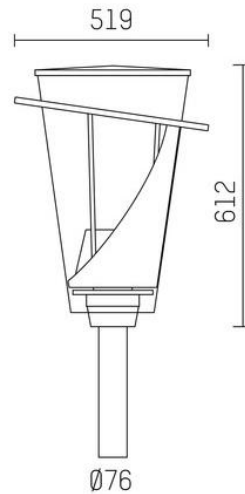
ICONIC 03

ICONIC 04

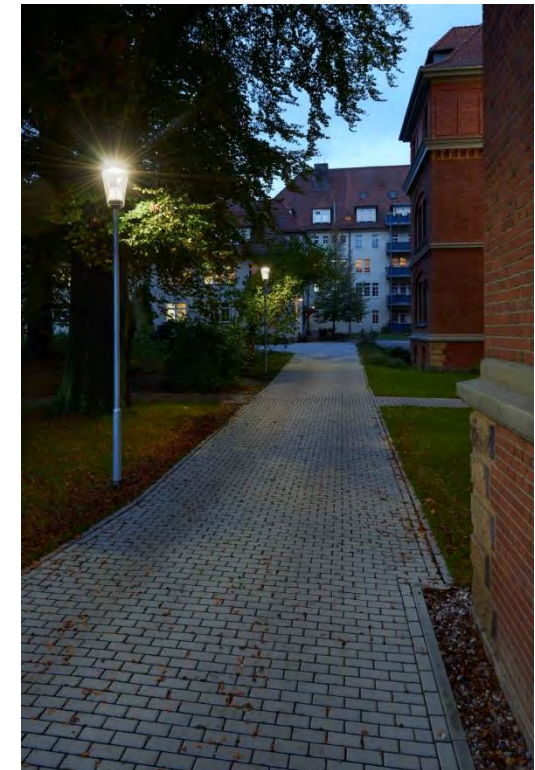


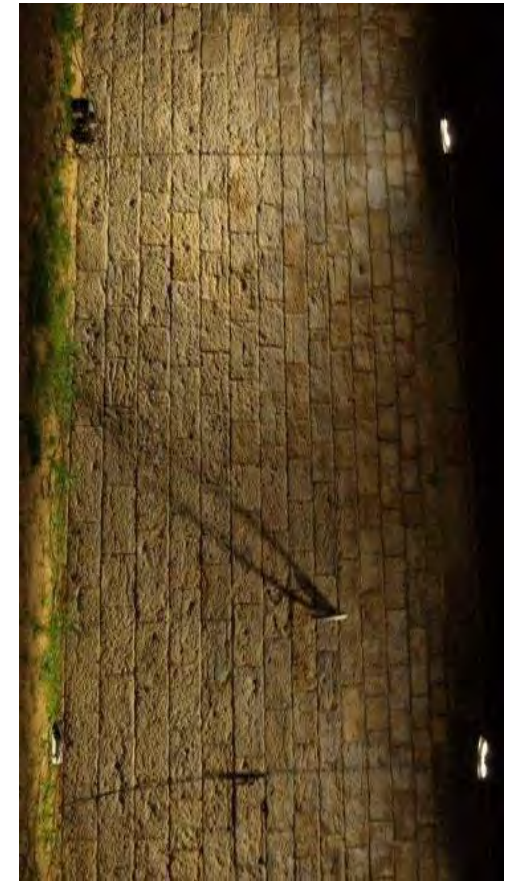
Classe électrique	1
Optiques disponibles	1
LED	20 à 48 W
Teintes disponibles	3000 / 4000K

Montage	Sur mât
Embout en top	Ø 76 mm



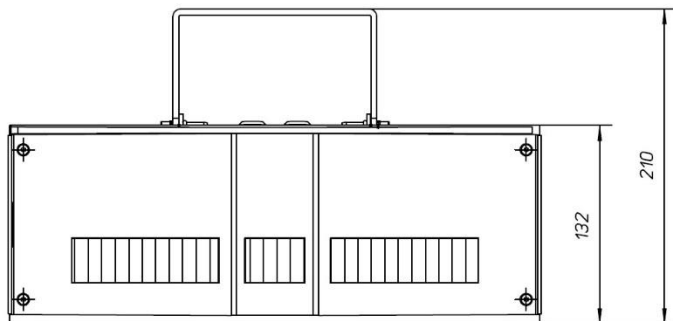
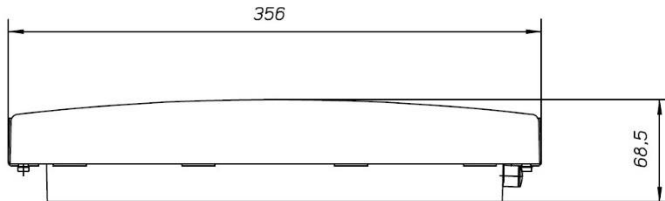
Routière





Classe électrique	1
LED	18 W
Teintes disponibles	3500 / 5000K

Montages	Etrier orientable Borne basse
----------	----------------------------------



Eclairage rasant

